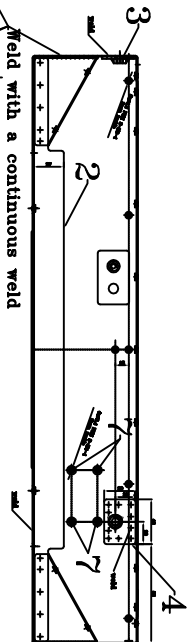
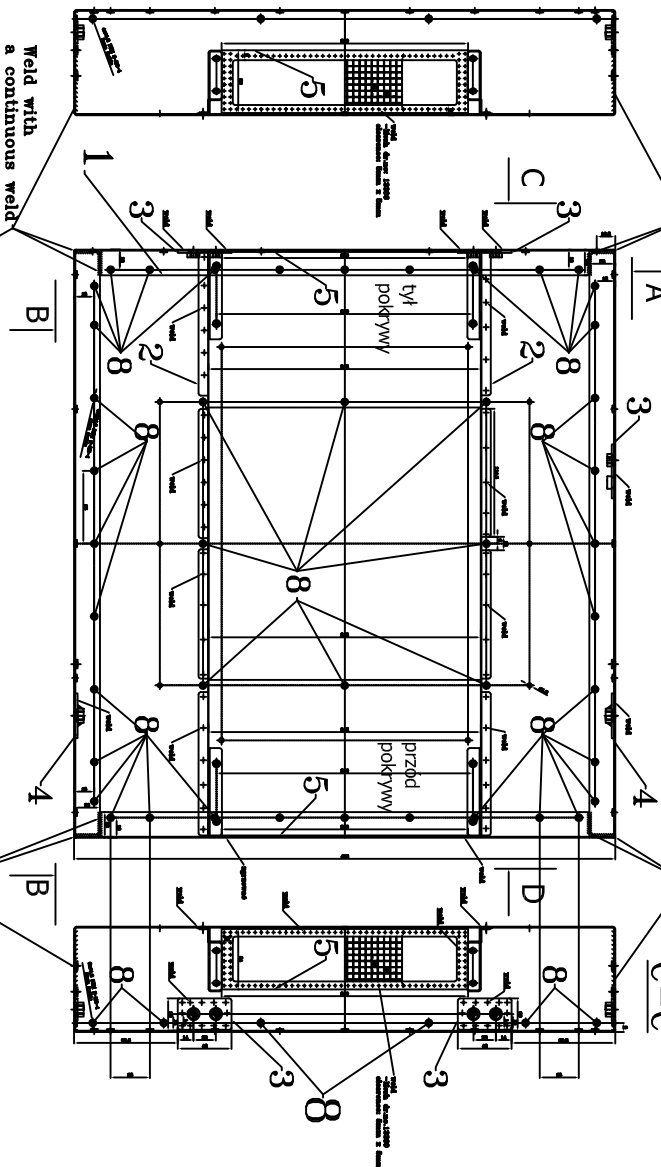


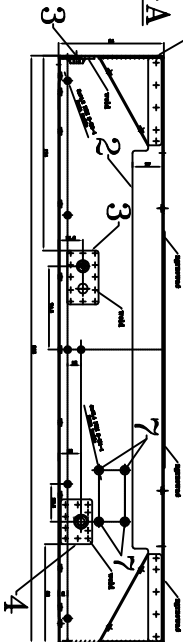
B-B



D-D



A-A



B-B

C-C

D-D

Bending with a radius of 1mm

Note !

Weld elements "2, 3, 4, and 5" to element "1"

Clean the welds.

Straighten after welding, welding.

Protect the threads from paint !

FINISH: RAL 9005  
thick structure  
painted black, matt.  
Powder paint.

BASE MATERIAL

St-3s (S235JR)  
Steel sheet # 1mm

Blunt the sharp edges.  
Note: 1 pos per Assy

SCALE: 1:1

No: 8	pos/1set	66	Name PEM -nut	Norm no:	A-M3-1
No: 7	pos/1set	8	Name PEM -nut	Norm no:	S-M4-1
No:	pos/1set		Name		
No: 5	pos/1set	2	Name Mesh	Draw. no:	13396
No: 4	pos/1set	2	Name Plate with PEM-nut M8	Draw. no:	13344
No: 3	pos/1set	3	Name Plate with PEM-nut M6	Draw. no:	13343
No: 2	pos/1set	2	Name L-plate Assembly	Draw. no:	13347z_rev1
No: 1	pos/1set	1	Name Top housing	Draw. no:	12627rev2
position	item		Name	Drawing no /	standard no

ITEM	MATERIAL	DIMENSIONS	FINISH: RAL 9005 thick structure painted black, matt
1	ST-3s, Steel sheet # 1mm	mm	

DESIGNED DATE

DRAWN R.L.

CHECKED

SCALE 1:1

TITLE Top housing

-Assembly

DATE

2023.04.26

OLD NUMBER

NUMBER

12628rev2

REV

TOLERANCE ISO 2768-1 (f)

NUMBER

12628rev2

REV

12628rev2

REV